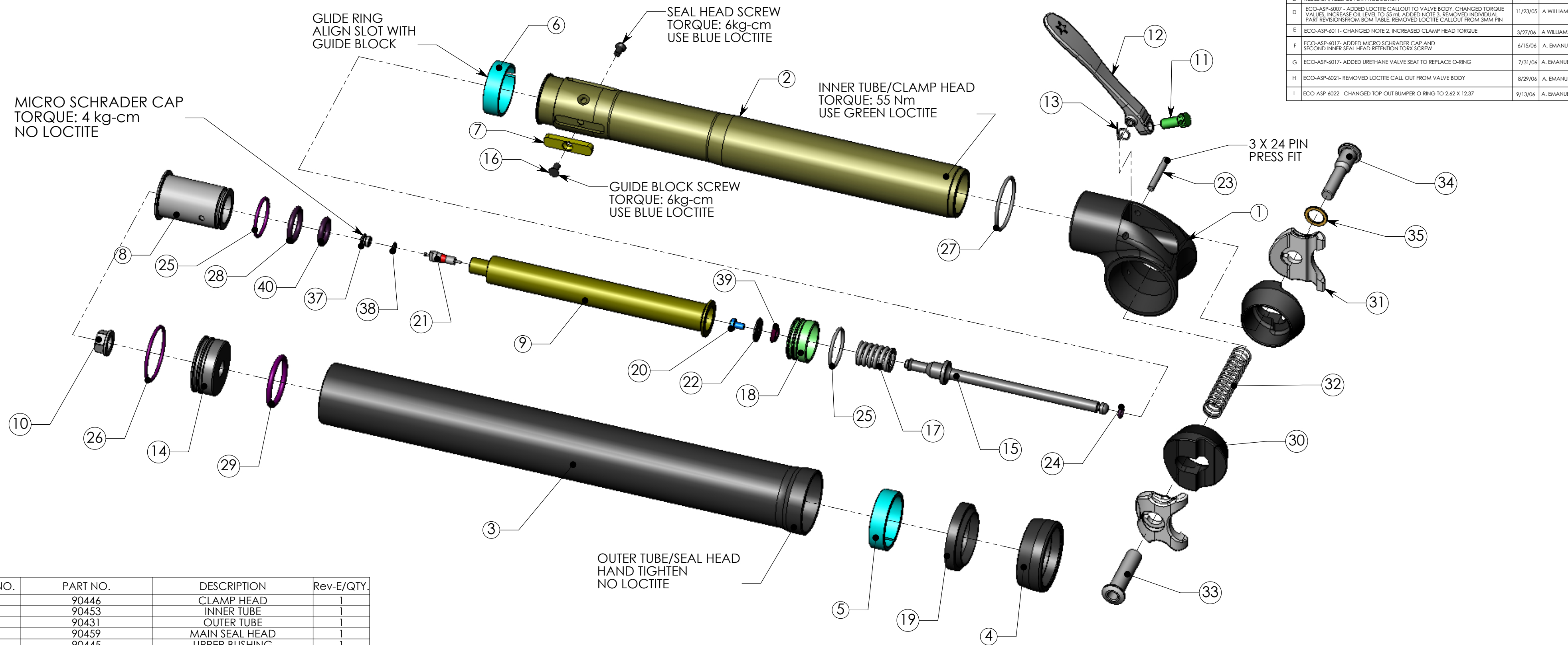


THE INFORMATION CONTAINED IN THIS DRAWING IS THE SOLE PROPERTY OF MAVERICK AMERICAN COMPANY. ANY REPRODUCTION IN PART OR WHOLE WITHOUT THE WRITTEN PERMISSION OF MAVERICK IS PROHIBITED.

REVISIONS			
REV	DESCRIPTION	DATE	APPROVED
A	RELEASE FOR PRODUCTION	11/16/04	P.TURNER
B	CHANGES TO INNER TUBE, BULK HEAD & CLAMP HEAD	12/29/04	P.TURNER
C	REDESIGN, RELEASE FOR PRODUCTION	5/21/05	P.TURNER
D	ECO-ASP-6007 - ADDED LOCTITE CALLOUT TO VALVE BODY, CHANGED TORQUE VALUES, INCREASE OIL LEVEL TO 55 ml, ADDED NOTE 3, REMOVED INDIVIDUAL PART REVISIONS FROM BOM TABLE, REMOVED LOCTITE CALLOUT FROM 3MM PIN	11/23/05	A.WILLIAMS
E	ECO-ASP-6011 - CHANGED NOTE 2, INCREASED CLAMP HEAD TORQUE	3/27/06	A.WILLIAMS
F	ECO-ASP-6017 - ADDED MICRO SCHRADER CAP AND SECOND INNER SEAL HEAD RETENTION TORX SCREW	6/15/06	A.EMANUEL
G	ECO-ASP-6017 - ADDED URETHANE VALVE SEAT TO REPLACE O-RING	7/31/06	A.EMANUEL
H	ECO-ASP-6021 - REMOVED LOCTITE CALL OUT FROM VALVE BODY	8/29/06	A.EMANUEL
I	ECO-ASP-6022 - CHANGED TOP OUT BUMPER O-RING TO 2.62 X 12.37	9/13/06	A.EMANUEL



ITEM NO.	PART NO.	DESCRIPTION	Rev-E/QTY.
1	90446	CLAMP HEAD	1
2	90453	INNER TUBE	1
3	90431	OUTER TUBE	1
4	90459	MAIN SEAL HEAD	1
5	90445	UPPER BUSHING	1
6	90448	GLIDE RING	1
7	90449	GUIDE BLOCK	1
8	90460	INNER SEALHEAD	1
9	90447	COMPRESSION SHAFT	1
10	90450	BASE NUT	1
11	90441	ADJUSTER SCREW	1
12	90456	RELEASE LEVER	1
13	90451	TORSION SPRING	1
14	90443	BASE CAP	1
15	90457	RELEASE ROD	1
16	90492	Torx Screw, 3 x 6	2
17	90452	VALVE SPRING	1
18	90490	VALVE BODY	1
19	90455	ROD WIPER, 26mm	1
20	90479	SCREW, 3 X 5 PANHEAD	1
21	90477	SCHRADER VALVE CORE	1
22	90476	Washer, 3 X 12 X .80	1
23	90478	PIN, 3 X 24	1
24	90480	O-Ring, 1.5 X 3	1
25	90192	O-Ring 1.5 X 18	2
26	90483	O-Ring 1.5 X 25	1
27	90009	O-Ring 1.5 X 26	1
28	90485	O-Ring 2.5 X 14	1
29	90486	O-Ring 2.5 X 22	1
30	90473	INNER RAIL CLAMP	2
31	90472	OUTER RAIL CLAMP	2
32	90474	RAIL CLAMP SPRING	1
33	90475	RAIL CLAMP NUT	1
34	90471	RAIL CLAMP BOLT	1
35	90476	WASHER, 8 X 12	1
36	N/A	OIL	1
37	90818	Micro Schrader Cap	1
38	90819	O-Ring 1.0 X 3	1
39	90823	ASP Urethane Valve Seat	1
40	90844	O-Ring 2.6 X 12.4 J	1

3 - APPLY 5 WT SUSPENSION FLUID TO ROD WIPER AND ALL O-RINGS PRIOR TO ASSEMBLY  
 2 - GREASE BUSHING, GLIDE RING, COMPRESSION SHAFT AND INNER TUBE WITH HI-LUBRICITY, PETROLIUM GREASE  
 1 - ADD 55 ML OF 5 WT SUSPENSION FLUID TO INTERNAL ASSY AND PRESSURIZE TO 70 PSI

NOTES UNLESS OTHERWISE SPECIFIED

PART NUMBER	POST SIZE
30107	Ø 30.9
30108	Ø 31.6

UNLESS OTHERWISE SPECIFIED DIMENSIONS ARE IN MILLIMETERS

**TOLERANCES**

DECIMALS ANGLES

X - ± .5 X - ± 1 DEG  
 .X - ± .10 X - ± .5 DEG  
 .XX - ± .05

CAD GENERATED DRAWING, DO NOT MANUALLY UPDATE

APPROVALS DATE

DRAWN BY: PAUL TURNER 11/17/04

CHECKED

MATERIAL: AS REQUIRED MFG ENG

DO NOT SCALE DRAWING QUAL ENG

PART NAME: ASP SEAT POST

3085 BLUFF ST, BOULDER, CO 80301  
 PH: 303.415-0370 FX: 303.415.0379

SCALE: 100%

FILE NAME: ASP Assy\_V4 Rev1