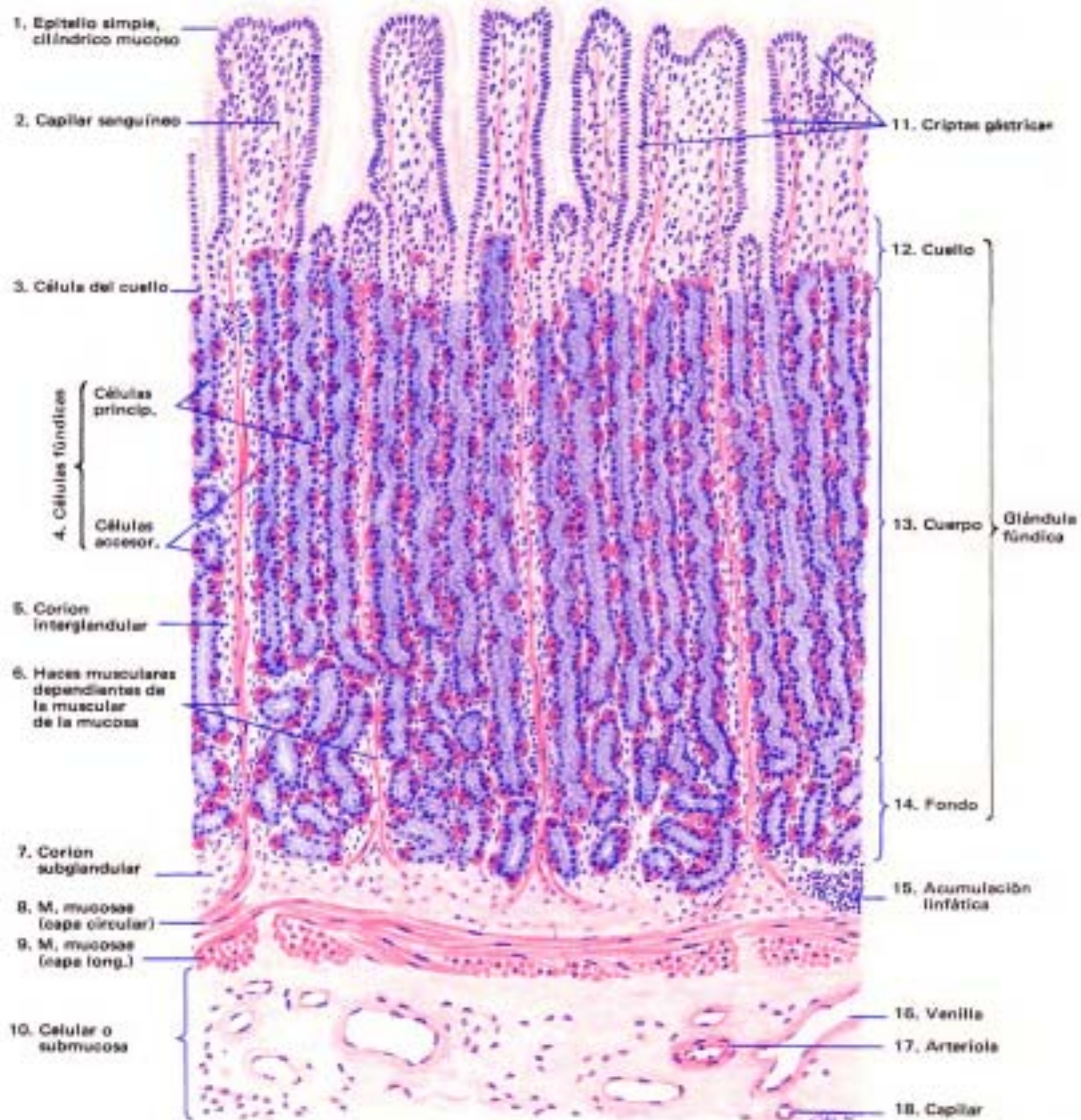
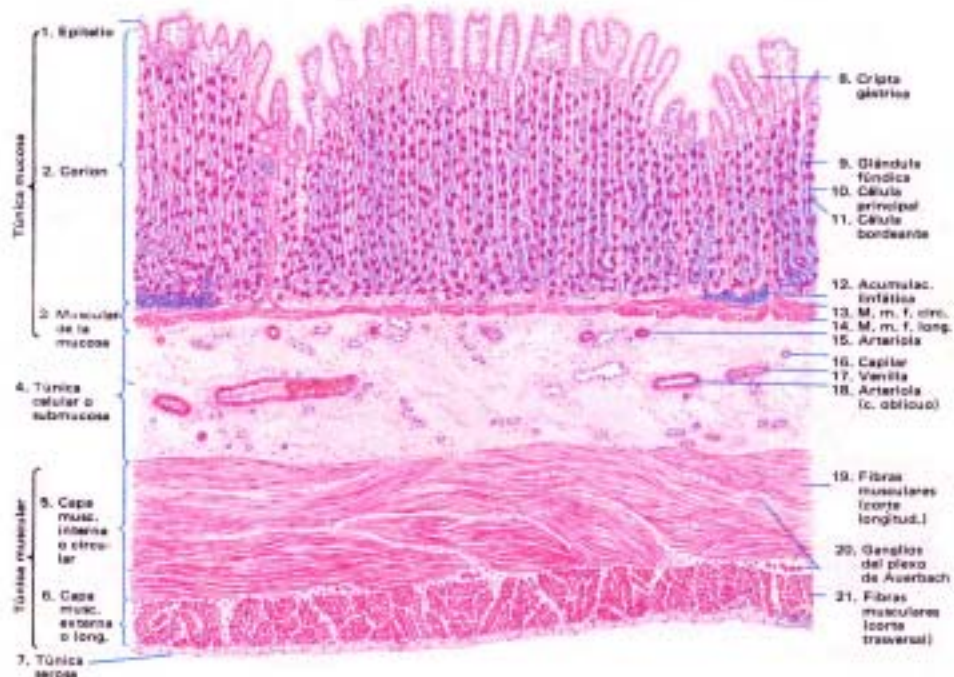
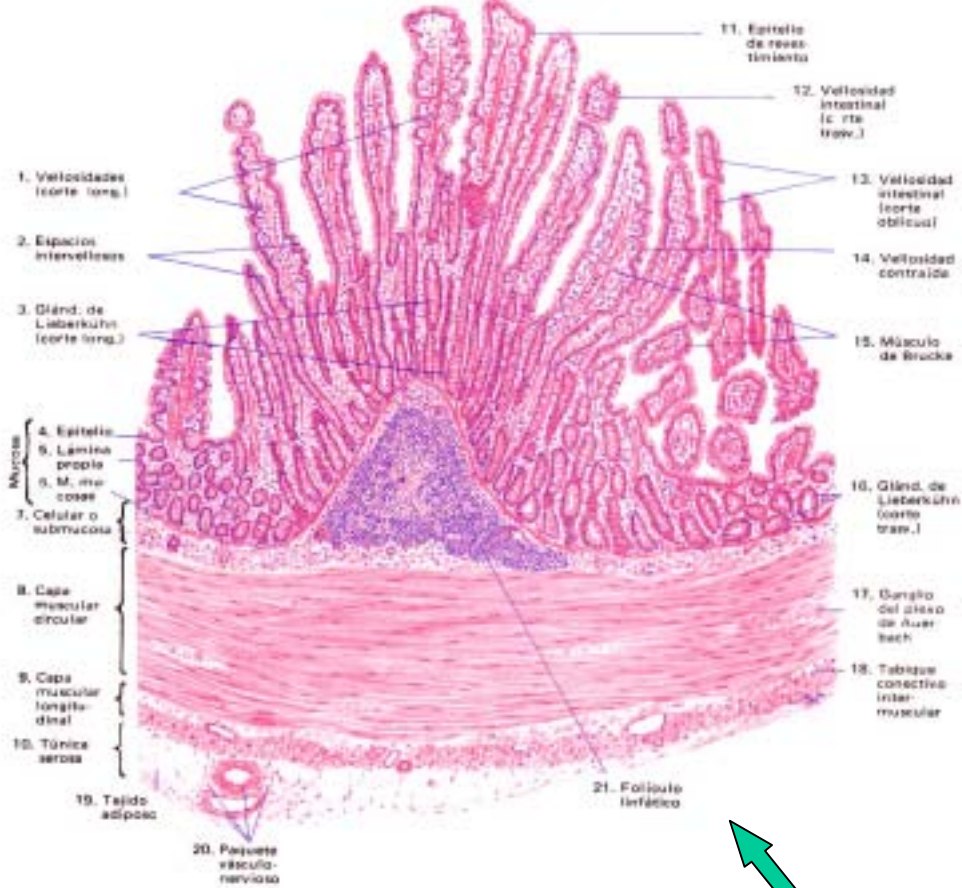


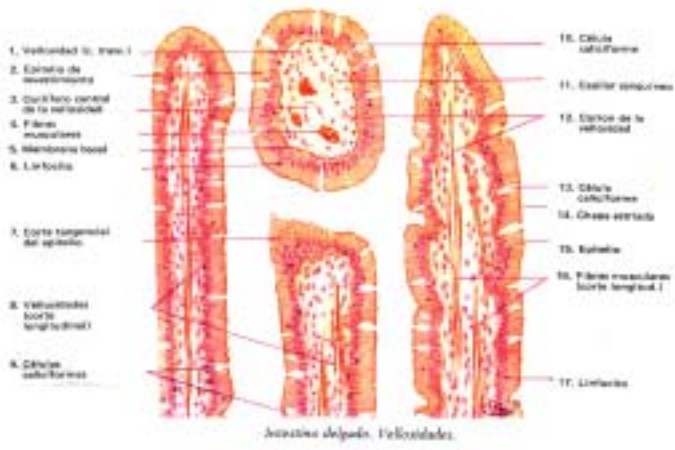
# ESTOMAGO



**INTESTINO DELGADO**  
Yeyunoíleon. (Corte transversal)



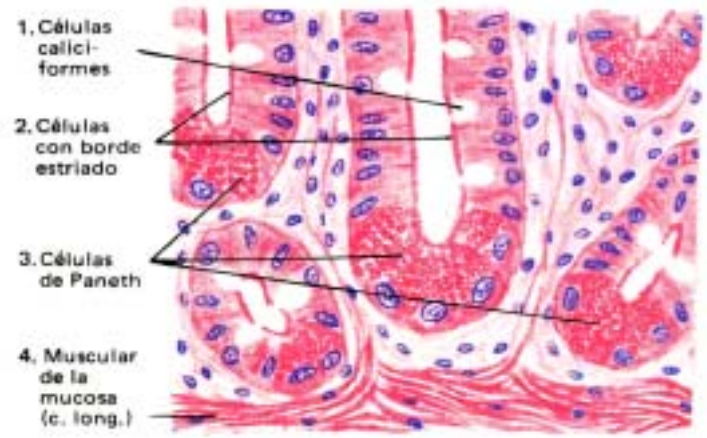
Organización general del intestino delgado



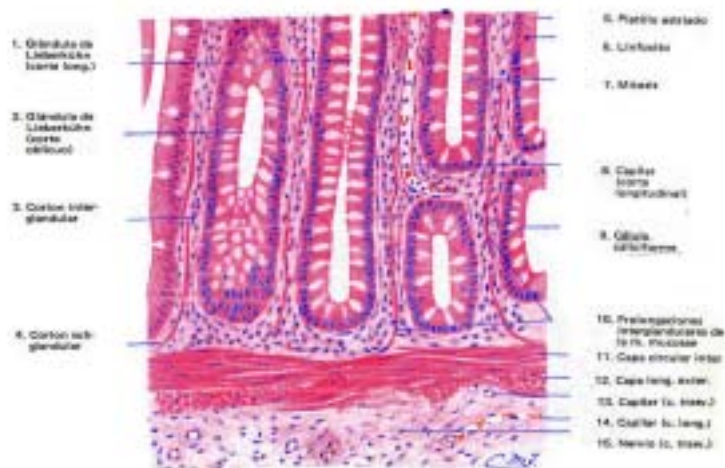
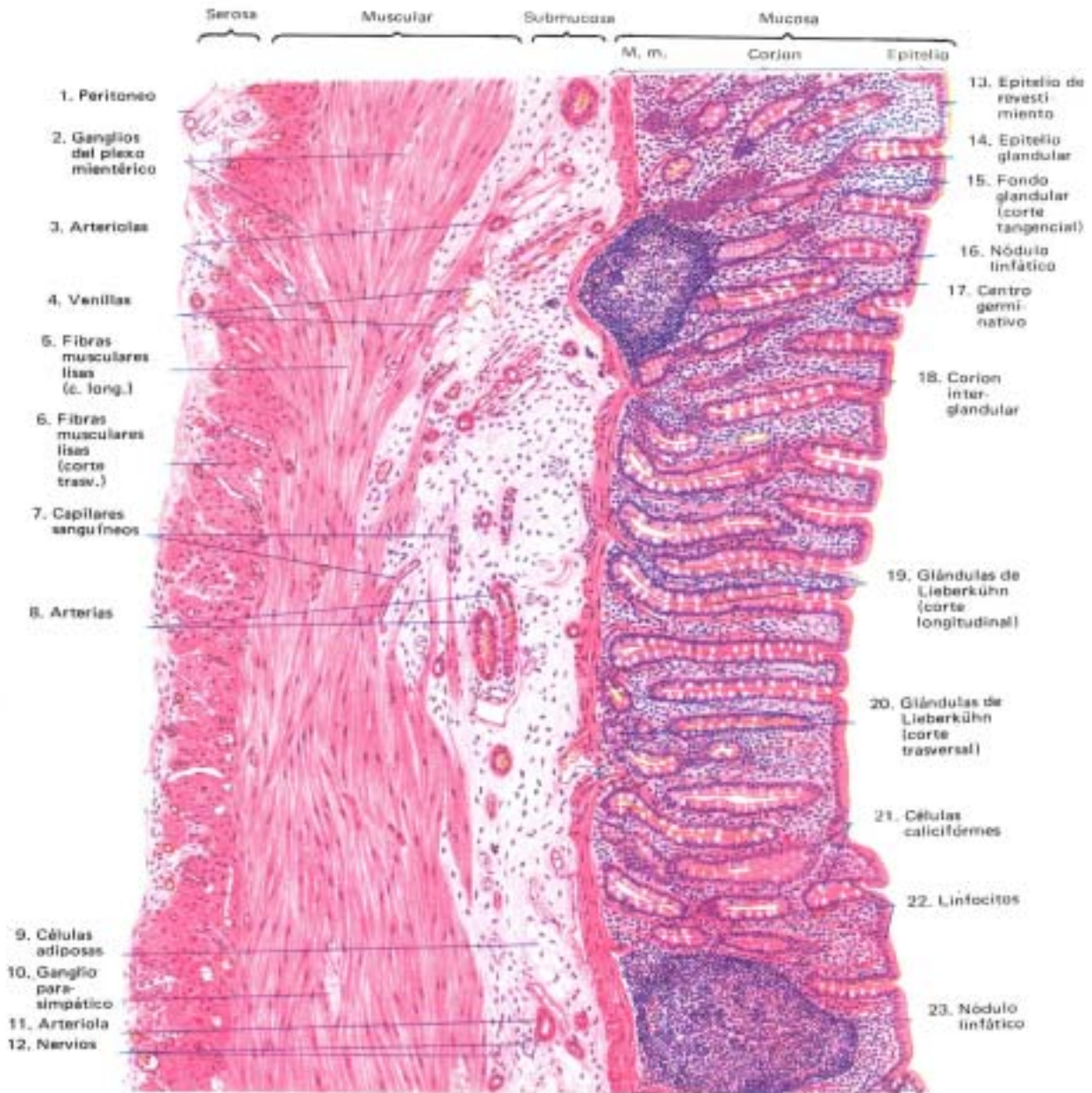
Detalle de una vellosidad intestinal

Detalle de una cripta de Lieberkühn

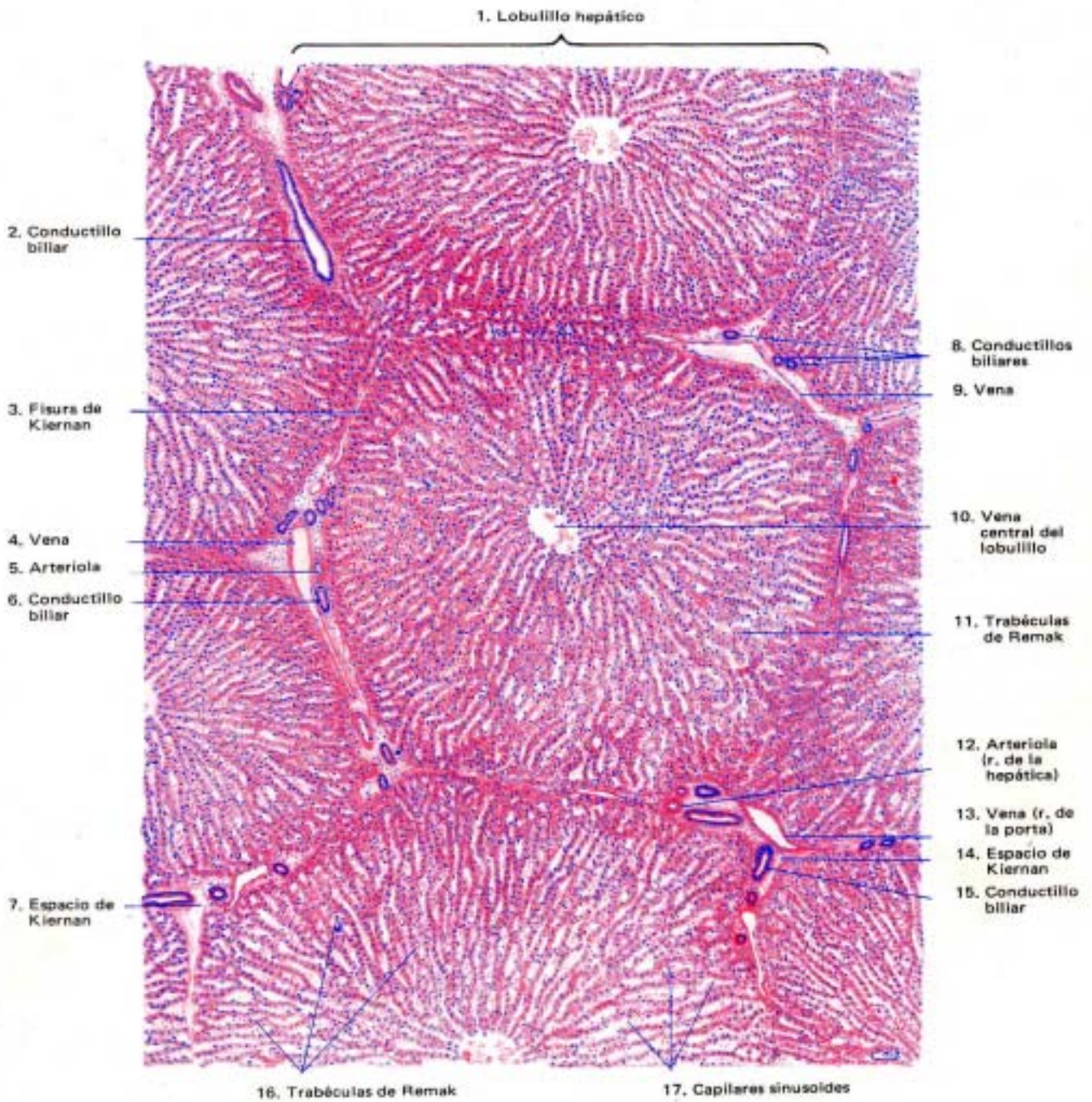
**Células de Paneth**



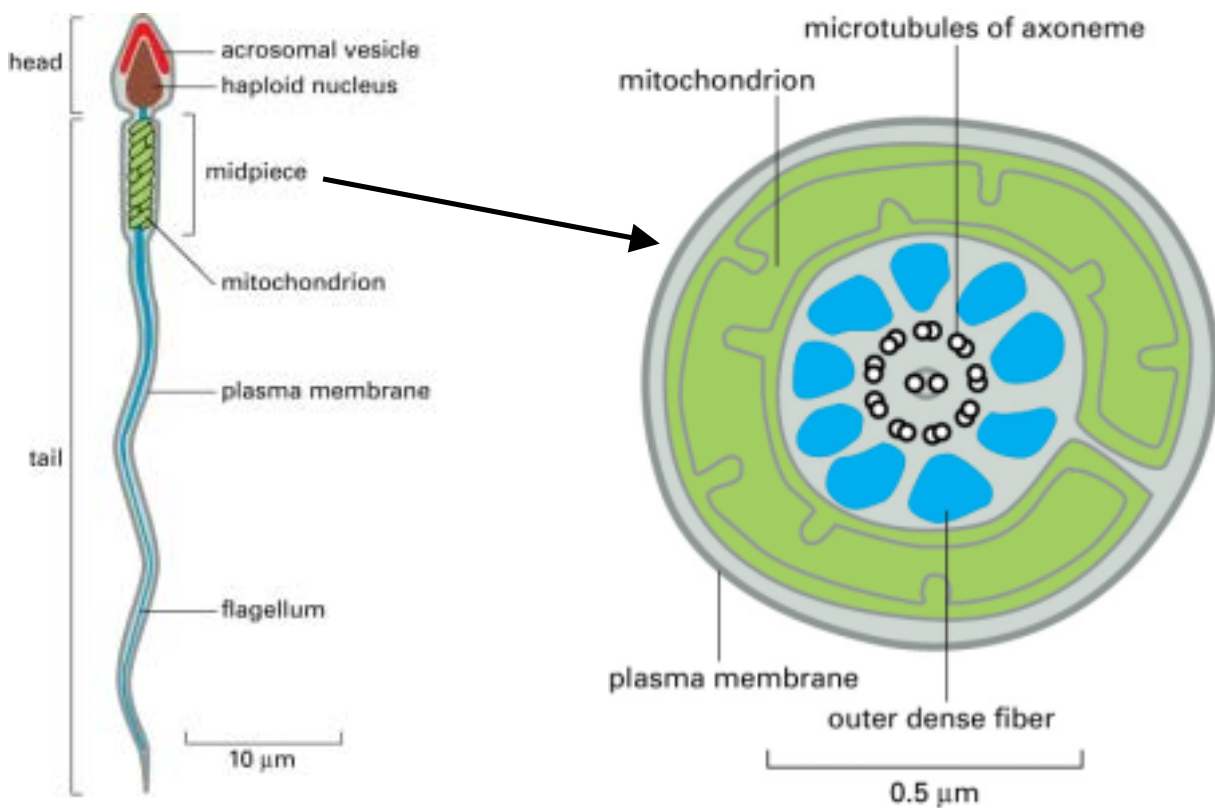
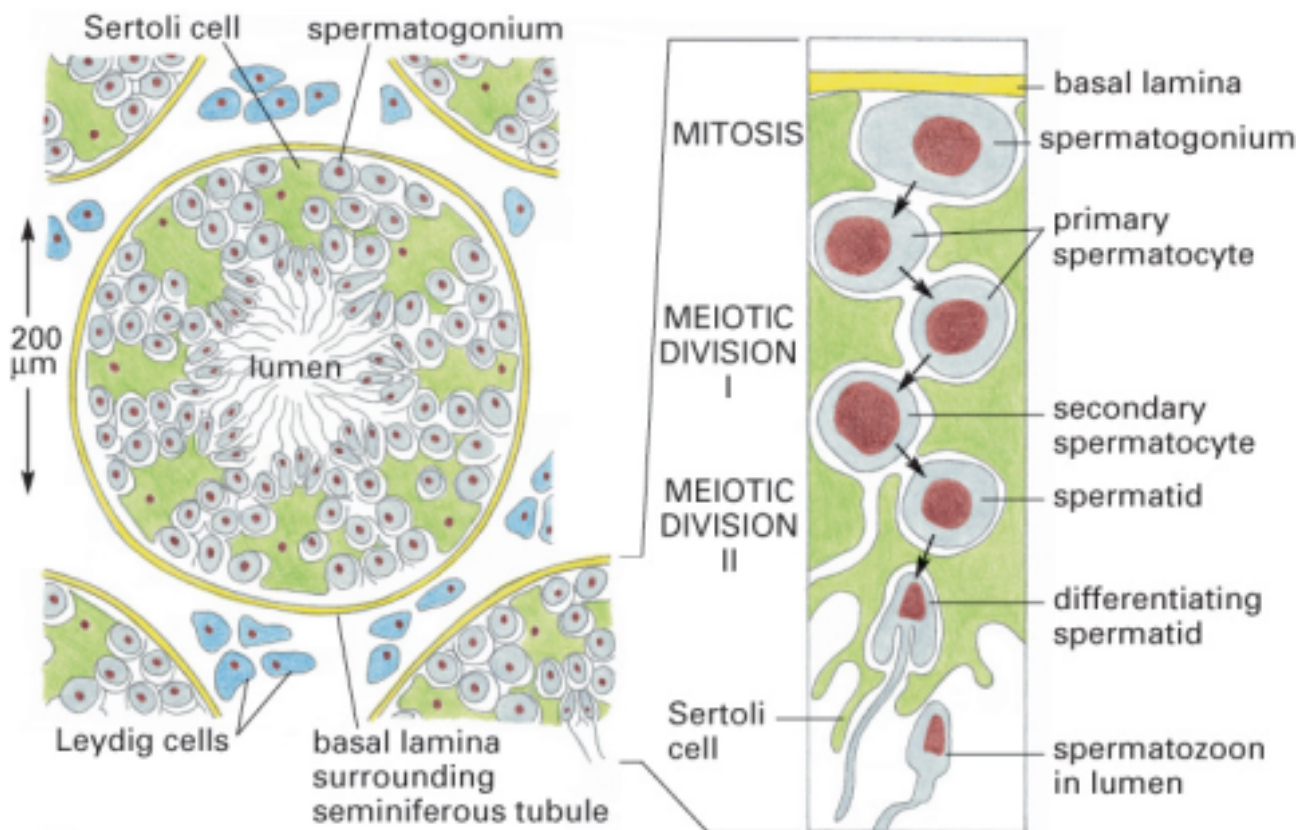
## INTESTINO GRUESO



Intestino grueso. Región profunda de la mucosa.



**Esquema de la organización básica del lobulillo hepático**



**Esquemas que muestran la estructura del túbulo seminífero (arriba) y del espermatozoide maduro (Abajo).**

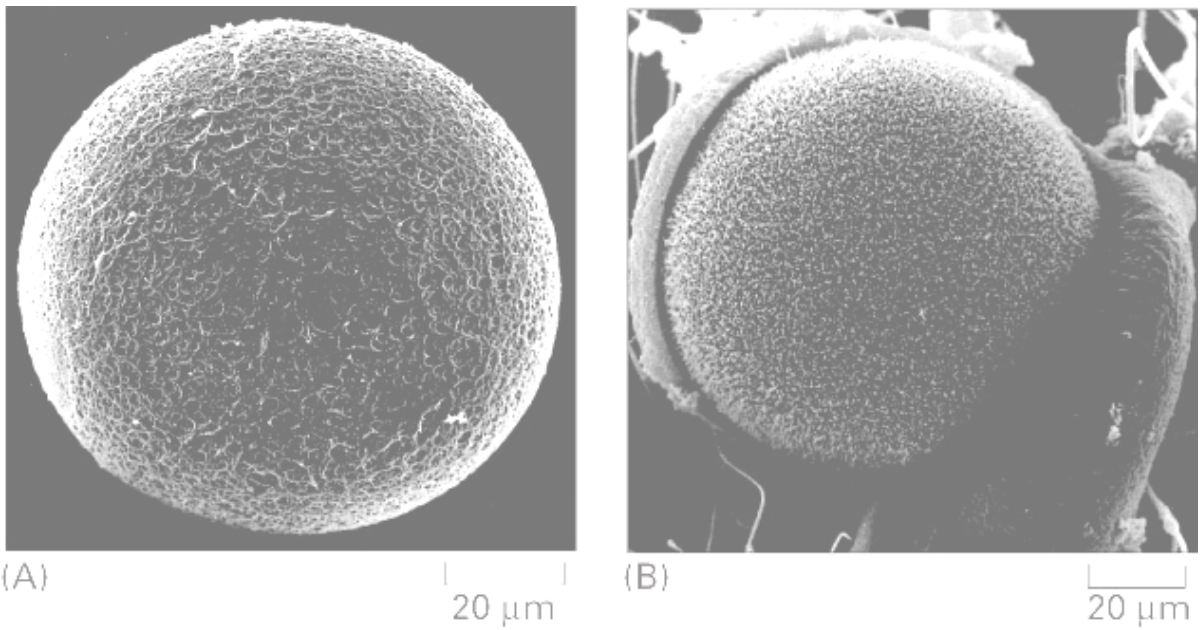


Figure 20–21. Molecular Biology of the Cell, 4th Edition.

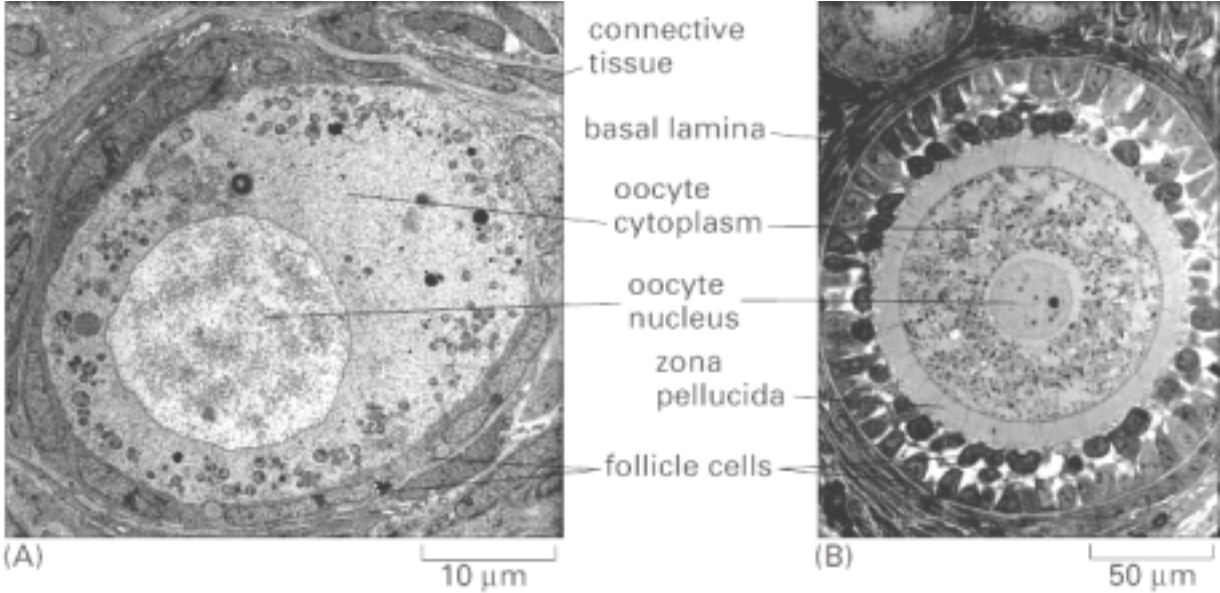


Figure 20–24. Molecular Biology of the Cell, 4th Edition.