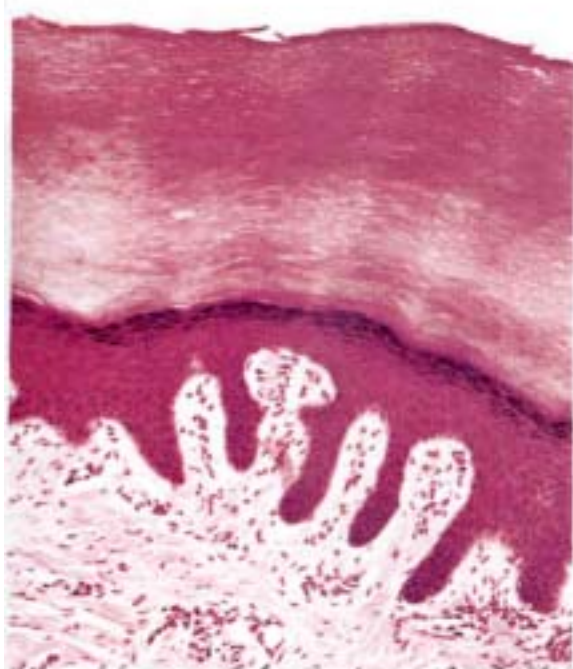
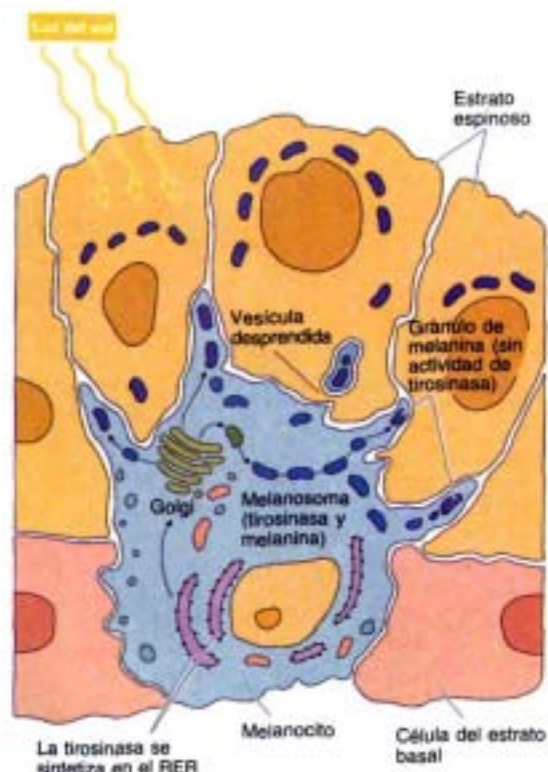


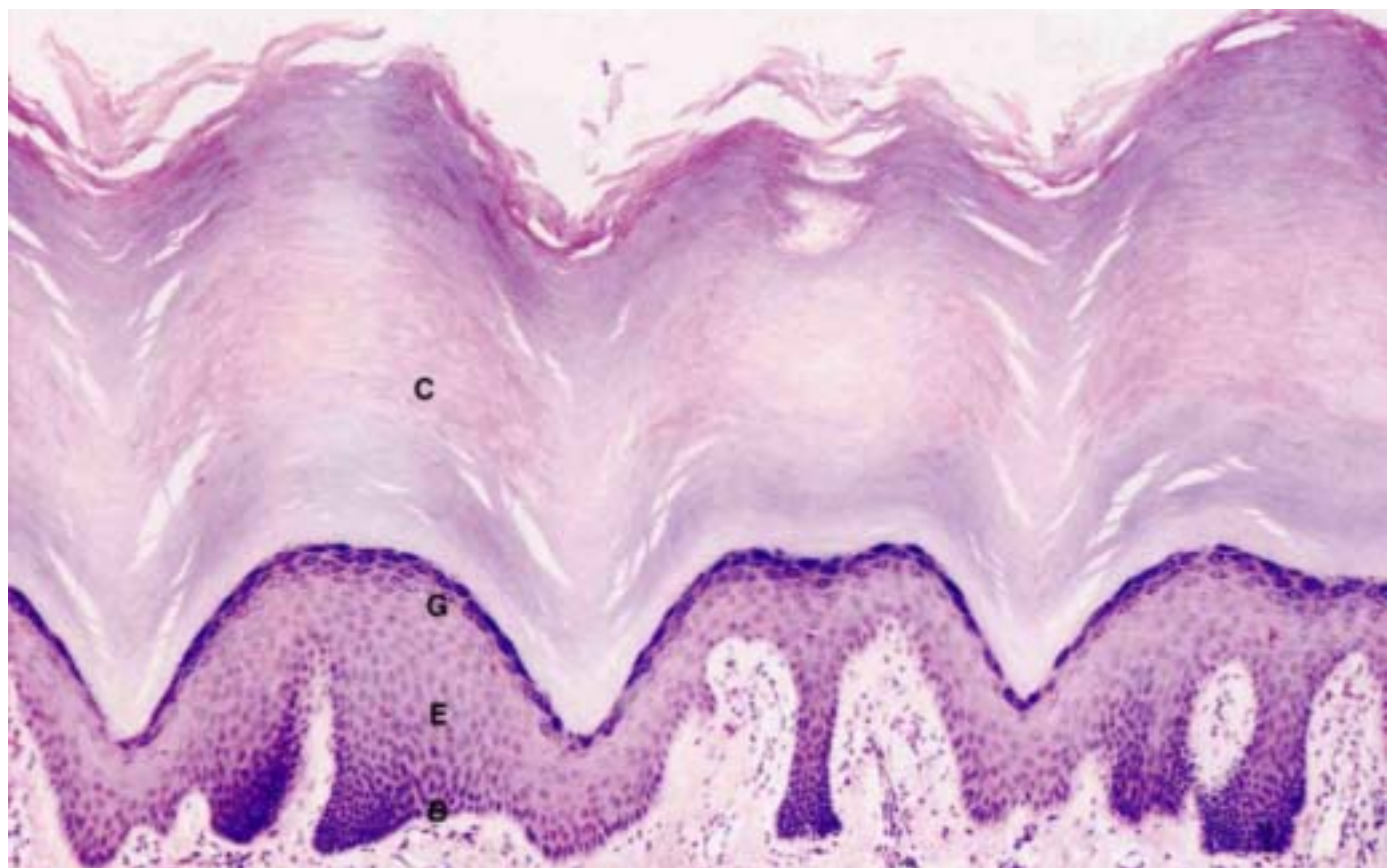
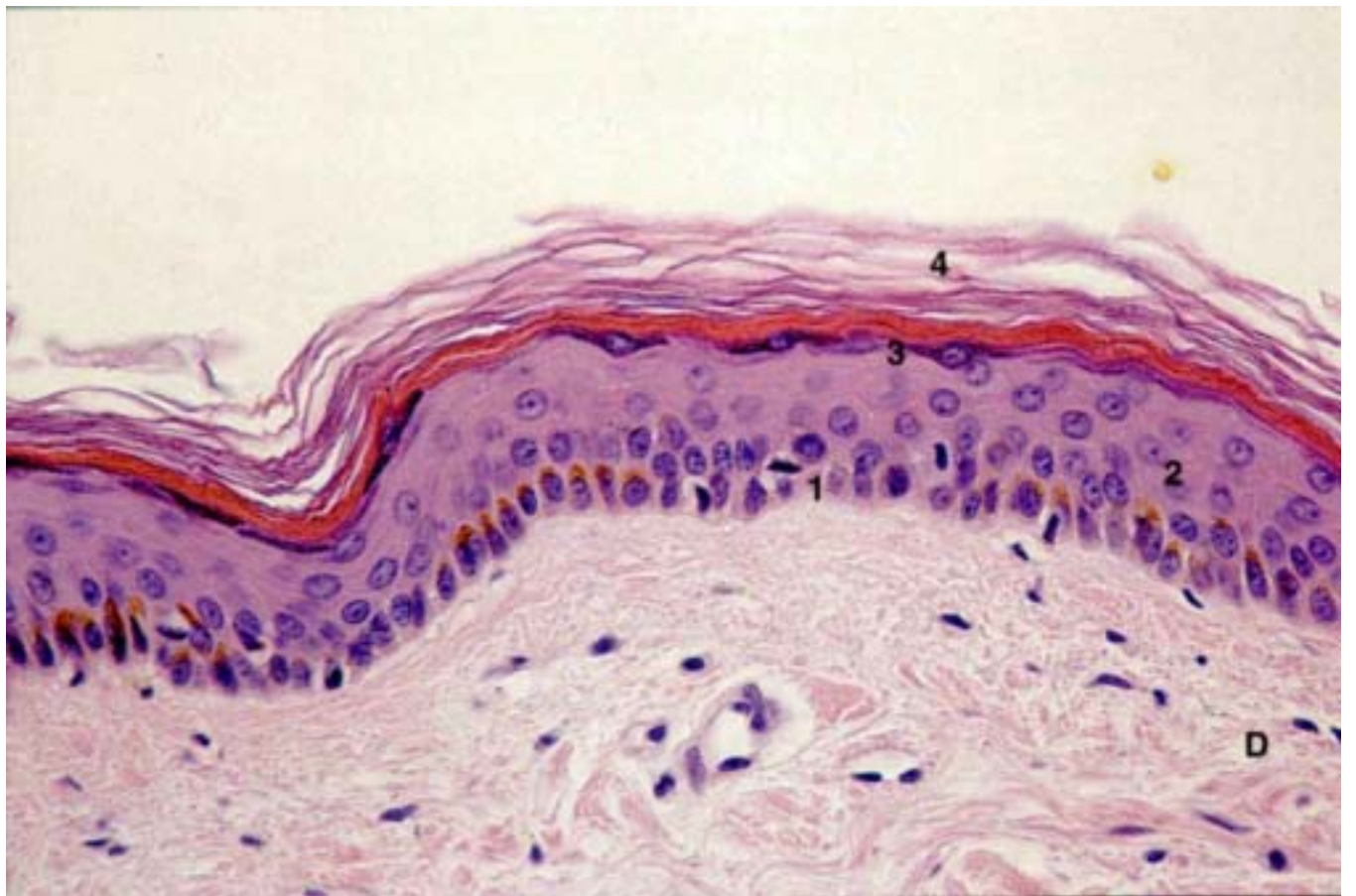
## Organización básica del tegumento

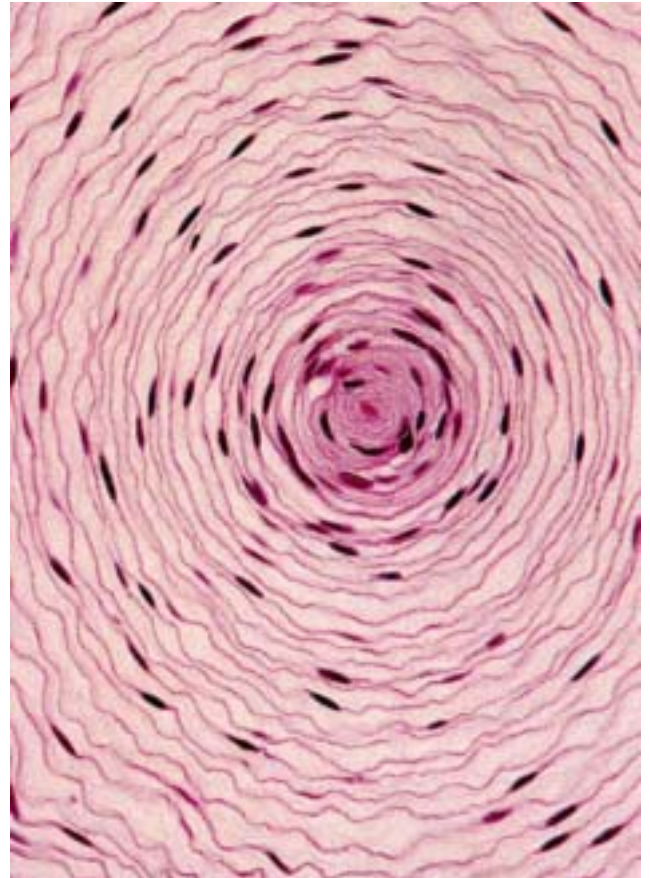
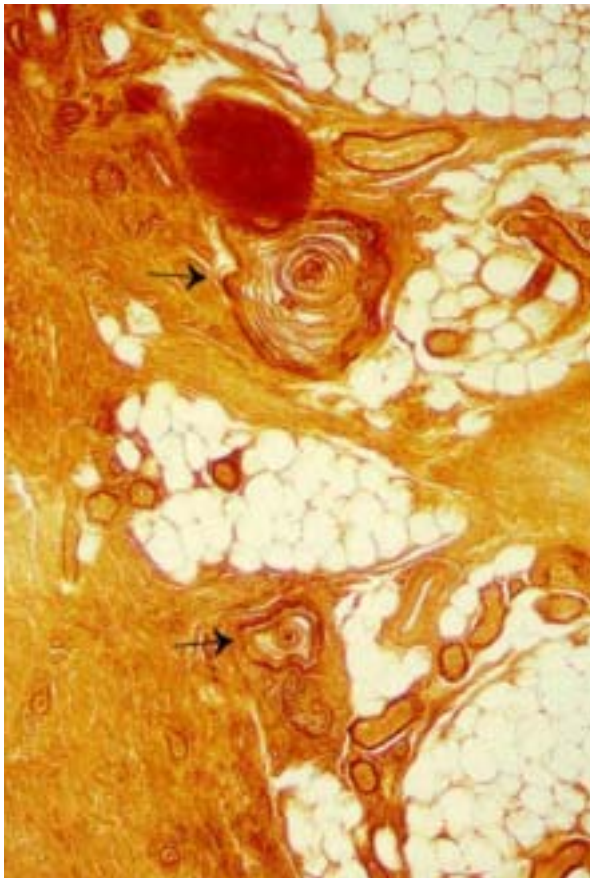
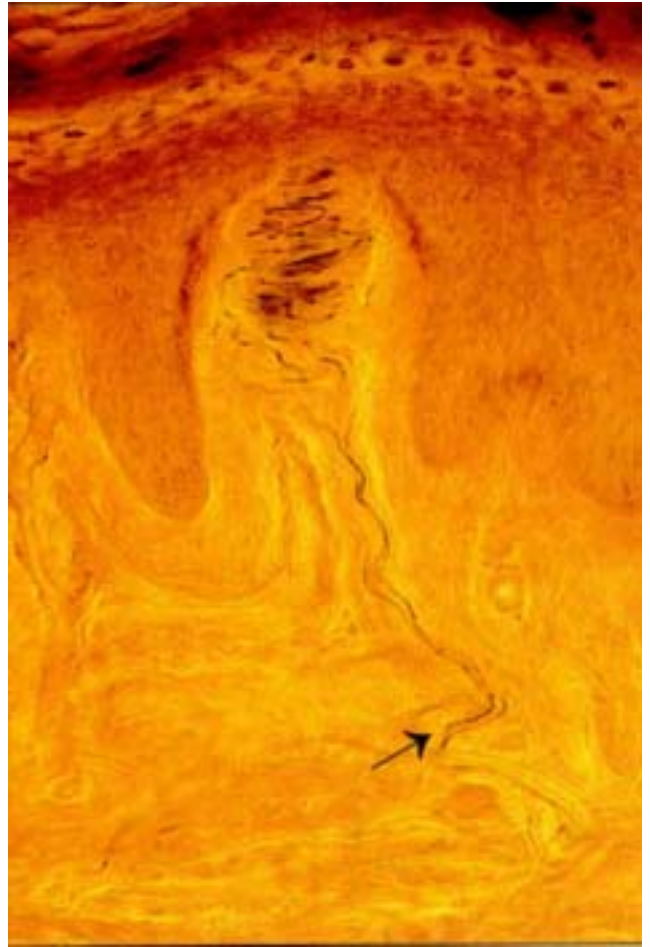
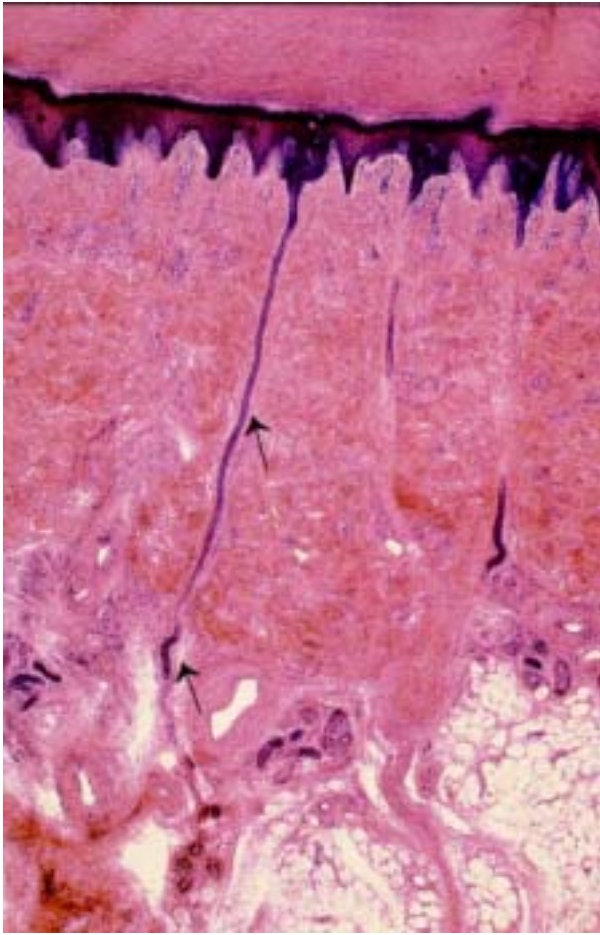


Fotomicrografía de piel gruesa (x 132).



melanocito







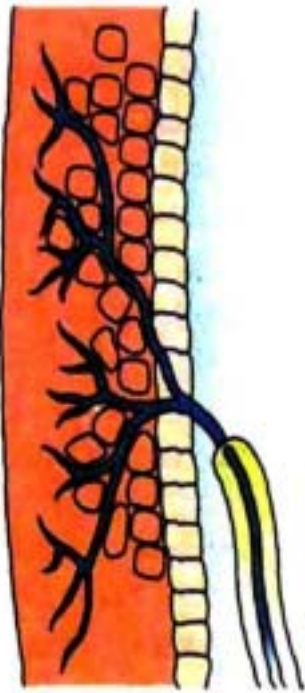
A



B



C



D



E



F

**Receptores sensitivos: A) disco de Merkel; B) corpúsculo de Meissner;  
C) corpúsculo de Pacini; D) terminaciones nerviosas desnudas;  
E) corpúsculo de Ruffini; F) bulbo Terminal de Krause**