


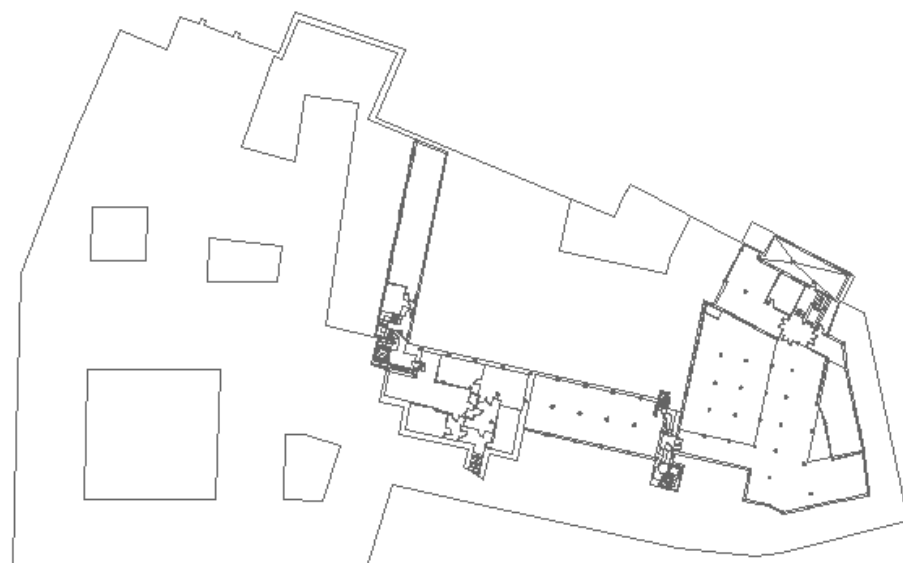


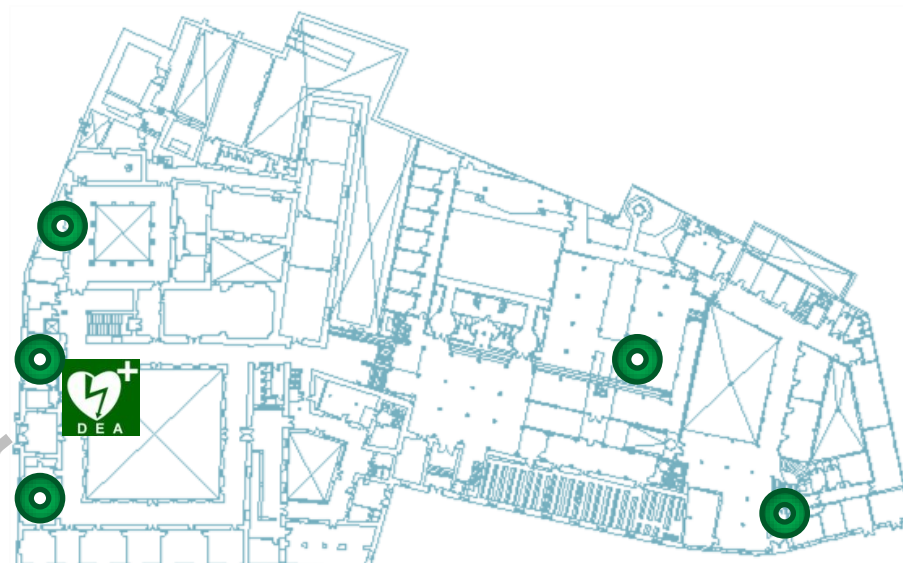
# Ubicación de Desfibriladores Externos Automatizados (DEA) y personal formado en DEA

 **DEA existente**  
 **Conserjería 957218787 (8787)**  
 **Personal formado en DEA**

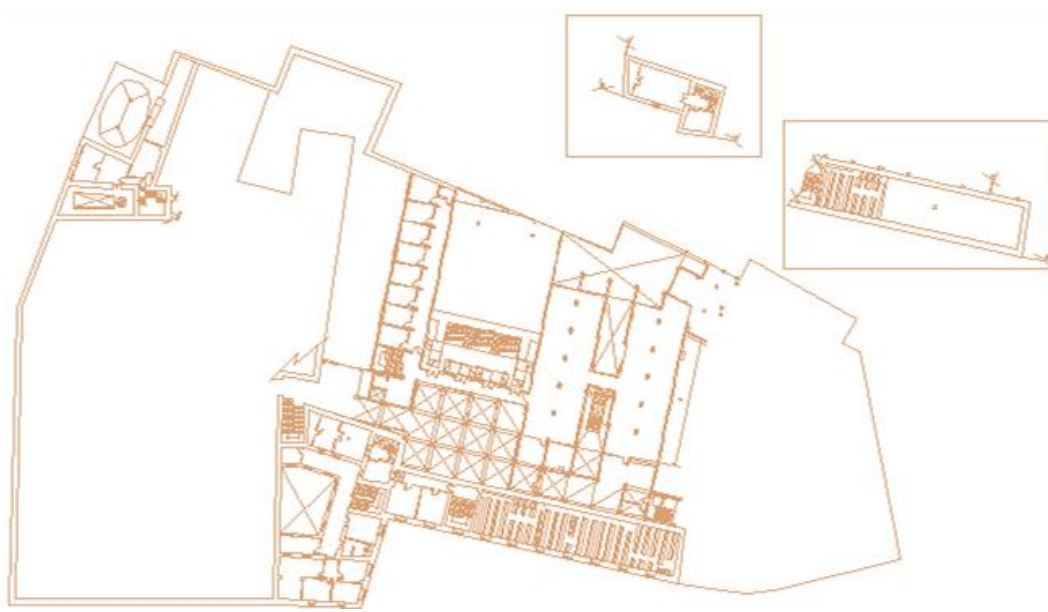


PLANTA SÓTANO

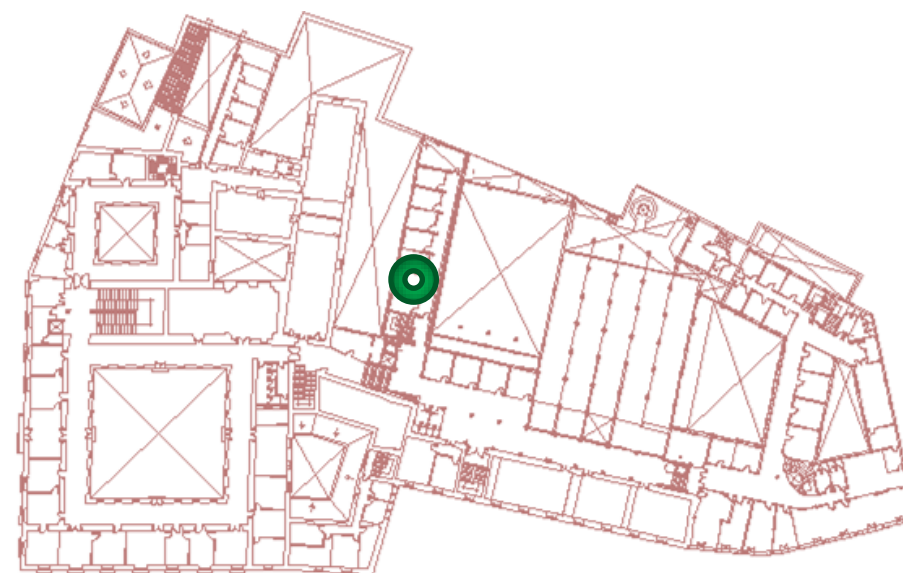
Acceso  
Entrada principal



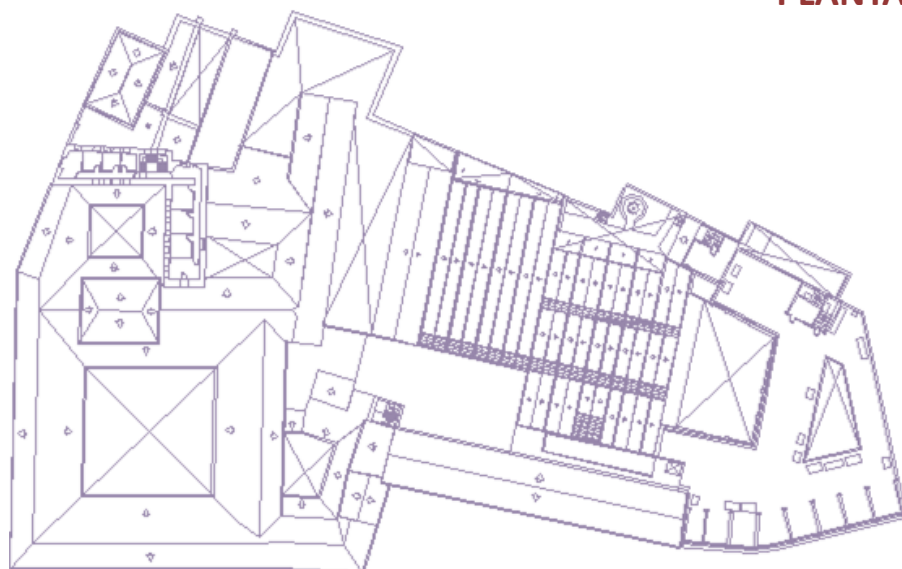
PLANTA BAJA



ENTREPLANTA










PLANTA PRIMERA



CASTILLETE

**SI TE ENCUENTRAS UNA PERSONA CON PARADA CARDIORESPIRATORIA:**

-  **Pide ayuda**
-  **Llama al 061**
-  **Contacta con el DEA  más cercano**
-  **Indica clara y exactamente tu nombre**
-  **Indica clara y exactamente tu ubicación**

<b>SERVICIO DE PREVENCIÓN DE RIESGOS LABORALES</b>	<b>UNIVERSIDAD DE CÓRDOBA</b>	
	Edificio: <b>Fac. de Filosofía y Letras</b>	
	<b>ZONA CARDIOASEGURADA</b>	
Escala: 0 	Fecha: 07/16	