


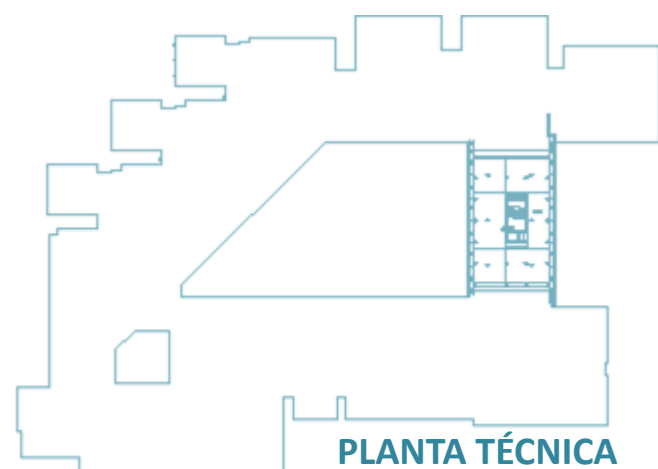
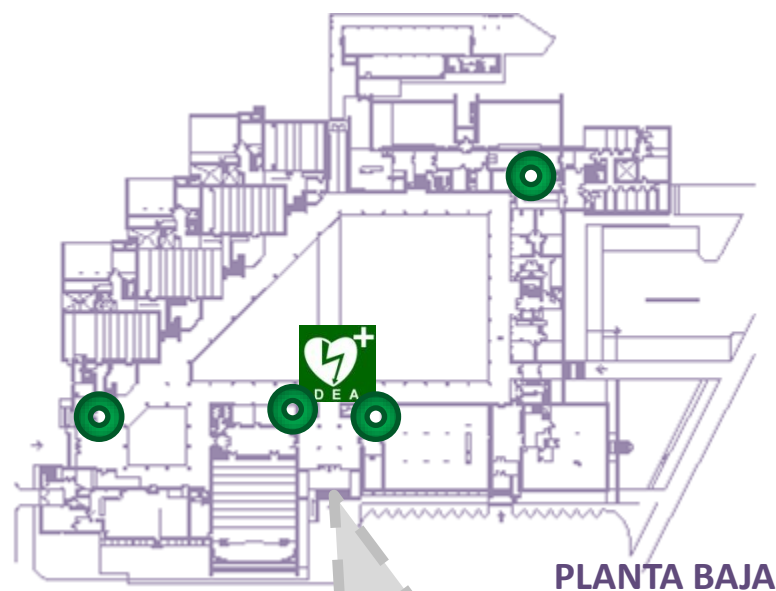
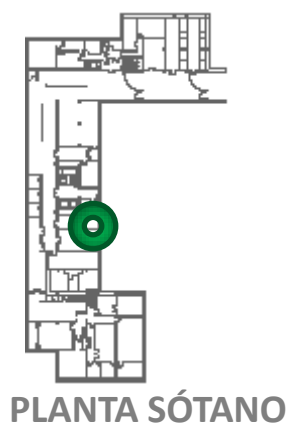
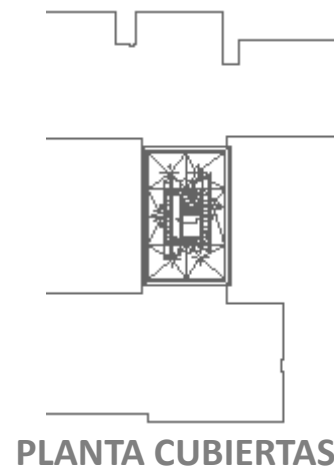
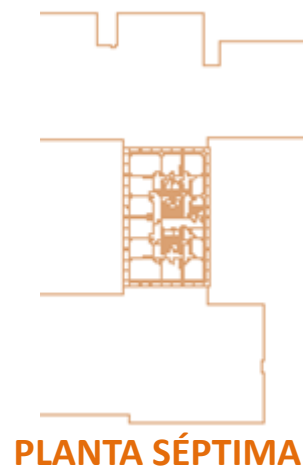
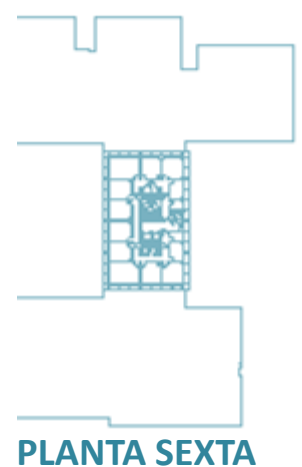
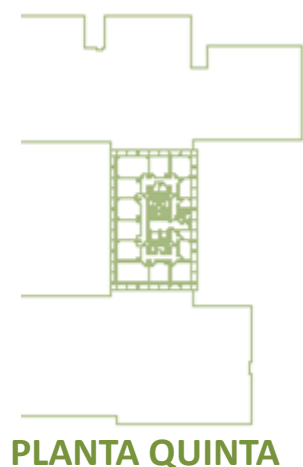
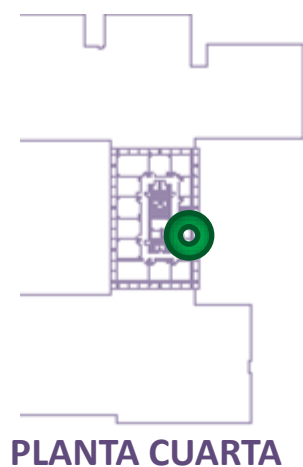
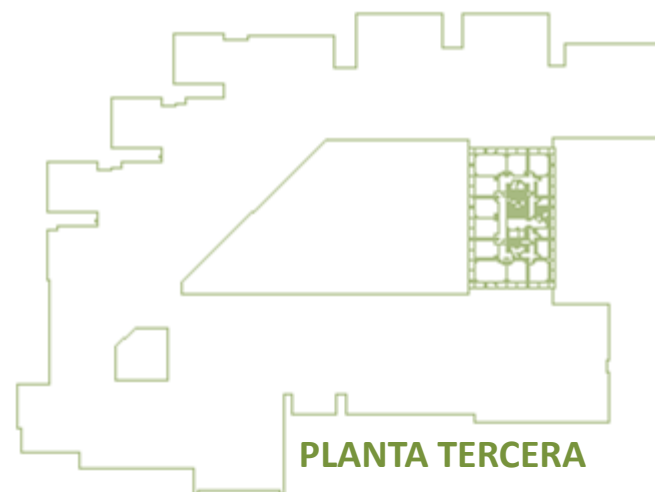
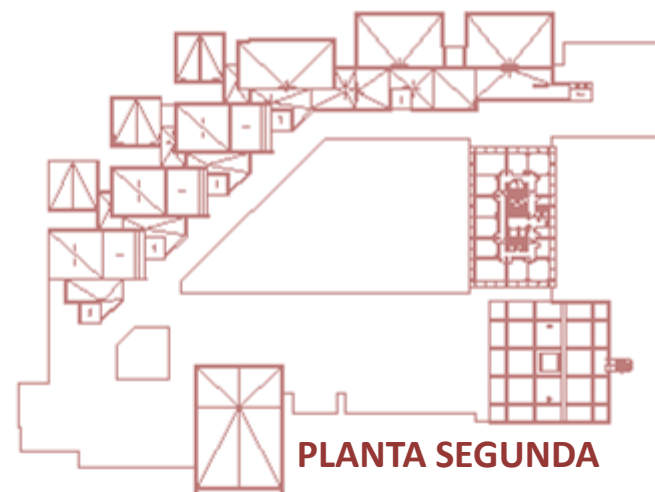
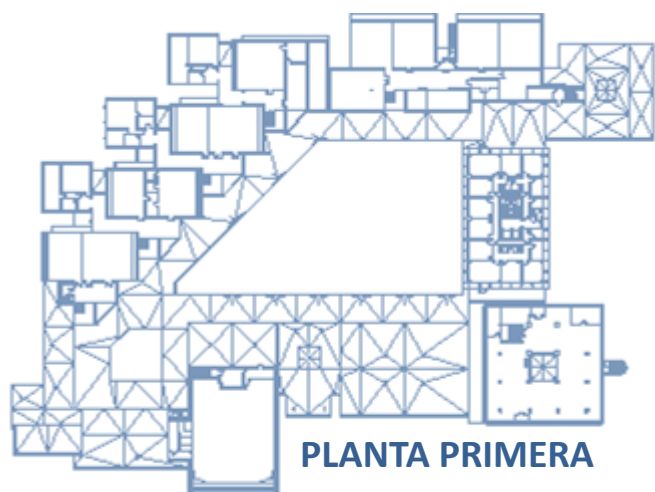


Ubicación de Desfibriladores Externos Automatizados (DEA) y personal formado en DEA







 **DEA existente**
 **Conserjería 957218235 (8235)**
 **Personal formado en DEA**



Acceso
Entrada principal



SI TE ENCUENTRAS UNA PERSONA CON PARADA CARDIORESPIRATORIA:

-  **Pide ayuda**
-  **Llama al 061**
-  **Contacta con el DEA  más cercano**
-  **Indica clara y exactamente tu nombre**
-  **Indica clara y exactamente tu ubicación**

SERVICIO DE PREVENCIÓN DE RIESGOS LABORALES	UNIVERSIDAD DE CÓRDOBA	
	Edificio: Fac. de Medicina - Norte	
	ZONA CARDIOASEGURADA	
Escala: 		Fecha: 07/16